

# Imperial Room Darkening

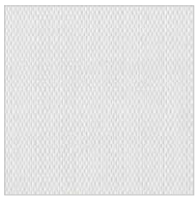
## Roller, Roman and Panel Glide fabric

- Technical**
- Fibre: 100% Polyester (coated with acrylic foam)
  - Opacity: Room Darkening tested to AS2663.1999
  - Width: 3000mm
  - Nominal Weight: 430gsm
  - Nominal Thickness: 0.70mm +/-5%
  - Light Fastness:  $\geq 7$  (Blue Scale)
  - Flame Retardant: Product is designed and manufactured to comply with Building Code of Australia requirements for class 2 to 9 buildings
  - Oeko-Tex Certified
  - Greenguard Accredited
  - 5 year fabric warranty

**Care** Surface dust can be removed with vacuum or a soft cloth.

**Price Groups** Roller 4

**Colour Range** *Textile detail and colour may not appear true to colour or scale. Please ask to see a sample.*



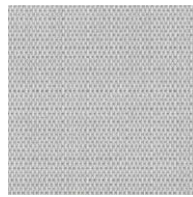
Polar



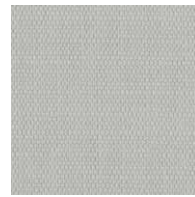
Llama



Onyx



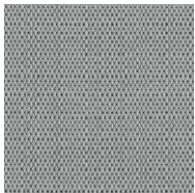
Owl



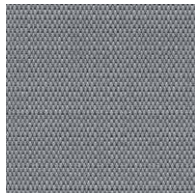
Albatross



Eland



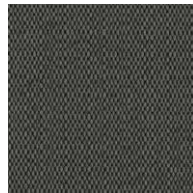
Hyrax



Jackal



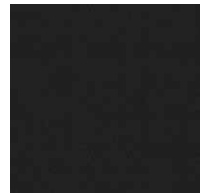
Chamois



Antelope



Mamba



Panther



Caribou



AMBIENCE

BLINDS • SHUTTERS • AWNINGS

[www.ambienceblinds.com.au](http://www.ambienceblinds.com.au)

V3\_0820